

GUARDIAN INDUSTRIES
300 HWY 212
MICHIGAN CITY, IN 46360



DRIVE KITS WITH GUARDIAN'S CURVED JAW COUPLINGS

CONTACT INFORMATION:
PH: 219-874-5248
FX: 219-879-6643



Guardian Industries Pump/Motor Mounts are designed for use with small gas engines which allow a direct connection to a hydraulic pump utilizing our curved jaw couplings. Castings are manufactured from a lightweight, high strength aluminum alloy. Each casting includes a custom molded access cover allowing for easy inspection of the drive coupling.

HONDA ENGINES GX 120 THRU GX 200

PUMP PILOT	# OF BOLTS	BCD	ENGINE PILOT	ENGINE BCD	ENGINE SHAFT DIA	ENGINE SHAFT LENGTH	GUARDIAN ADAPTOR#	COUPLING SERIES
(1.78") 4F17	4	2.838"	1.625"	3.625"	0.750"	2.548"	G11-104-4.690F	24/32
(2.00") A-A	2	3.250"	1.625"	3.625"	0.750"	2.548"	G11-106-4.69F	24/33
(3.25") A	2	4.187"	1.625"	3.625"	0.750"	2.548"	G11-108-4.690F	24/32

HONDA ENGINES GX 240 THRU GX 390

PUMP PILOT	# OF BOLTS	BCD	ENGINE PILOT	ENGINE BCD	ENGINE SHAFT DIA	ENGINE SHAFT LENGTH	GUARDIAN ADAPTOR#	COUPLING SERIES
(3.25") A	2	4.187"	5.750"	6.500"	1.000"	3.640"	G16-134-6.000	24/32
(4.00") B	2	5.750"	5.750"	6.500"	1.000"	3.640"	G21-204-6.00F	24/32

HONDA ENGINES GX 610 THRU GX 630

PUMP PILOT	# OF BOLTS	BCD	ENGINE PILOT	ENGINE BCD	ENGINE SHAFT DIA	ENGINE SHAFT LENGTH	GUARDIAN ADAPTOR#	COUPLING SERIES
(3.25") A	2	4.187"	5.750"	6.500"	1.000"	2.910"	G16-134-5.625	24/32
(4.00") B	2	5.750"	5.750"	6.500"	1.000"	2.910"	G21-204-6.00F	28/38

HONDA ENGINE GX 660 THRU GX 690

PUMP PILOT	# OF BOLTS	BCD	ENGINE PILOT	ENGINE BCD	ENGINE SHAFT DIA	ENGINE SHAFT LENGTH	GUARDIAN ADAPTOR#	COUPLING SERIES
(3.25") A	2	4.187"	5.750"	6.500"	1.125"	3.776"	G18-148-6.750	28/38
(4.00") B	2	5.750"	5.750"	6.500"	1.125"	3.776"	G18-155-6.750	28/38

COUPLING SELECTION

SERIES 24/32 HUBS

SHAFT DIAMETER	KEYWAY	# OF TEETH	GUARDIAN #
0.625"	0.156"	NA	1682432PMB073
0.625"	0.188"	NA	1682432PMB075
0.750"	0.188"	NA	1682432PMB101
0.875"	0.188"	NA	1682432PMB150
0.875"	0.250"	NA	1682432PMB160
1.000"	0.250"	NA	1682432PMB200
0.625"	NA	9	1682432PMB775
0.875"	NA	13	1682432PMB802

SERIES 28/38 HUBS

SHAFT DIAMETER	KEYWAY	# OF TEETH	GUARDIAN #
0.625"	0.156"	NA	1682838PMB070
0.625"	0.188"	NA	1682838PMB075
0.750"	0.188"	NA	1682838PMB090
0.875"	0.188"	NA	1682838PMB130
0.875"	0.250"	NA	1682838PMB131
1.000"	0.250"	NA	1682838PMB172
1.125"	0.250"	NA	1682838PMB225
0.625"	NA	9	1682838PMB691
0.875"	NA	13	1682838PMB770
1.000"	NA	15	1682838PMB781

SERIES 24/32 SPIDERS

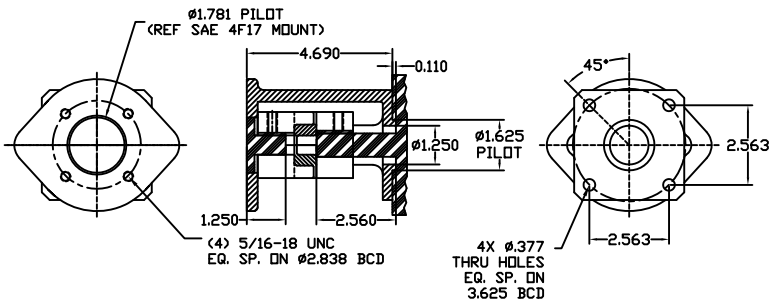
DURO	GUARDIAN #
98 SHORE A	16624328
64 SHORE D	16624329***

***USE ONLY IN GX610, GX620 & GX630 SET-UPS

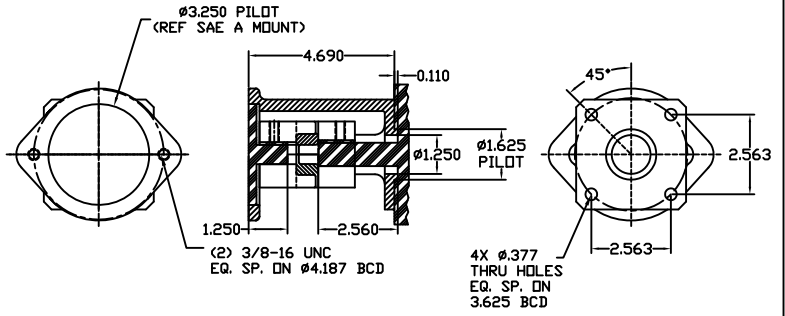
SERIES 28/38 SPIDERS

DURO	GUARDIAN #
98 SHORE A	16628388

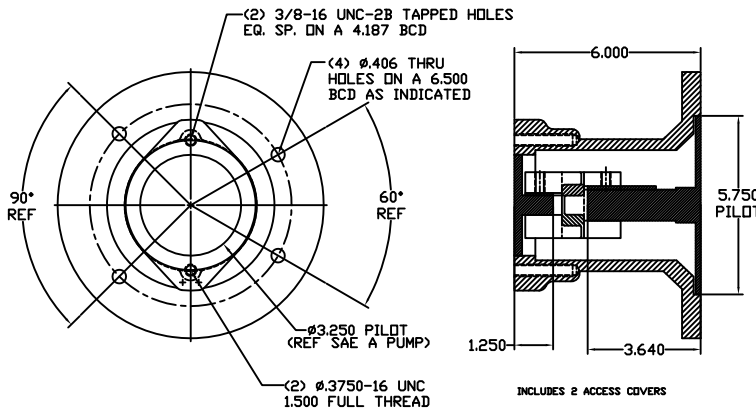
GX 100 THRU GX 200



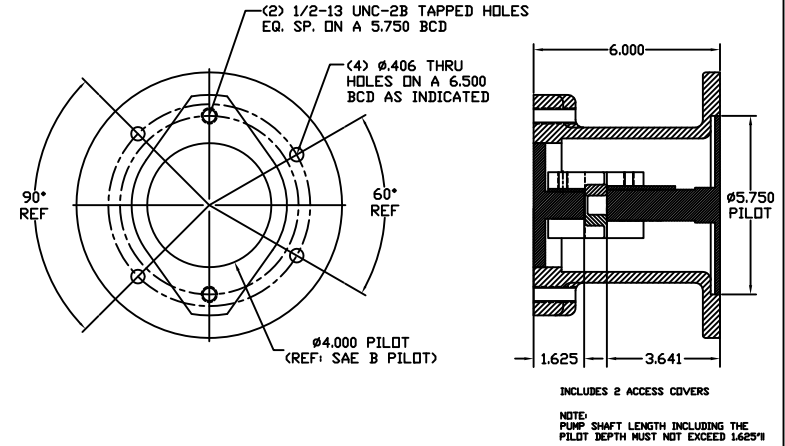
GX 100 THRU GX 200



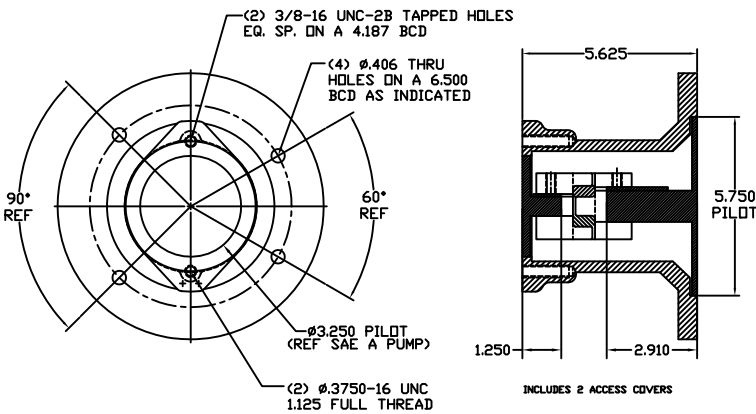
GX 240 THRU GX 390



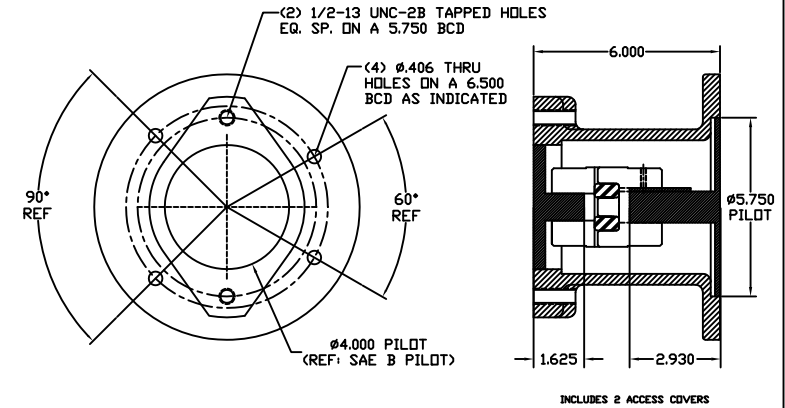
GX 240 THRU GX 390



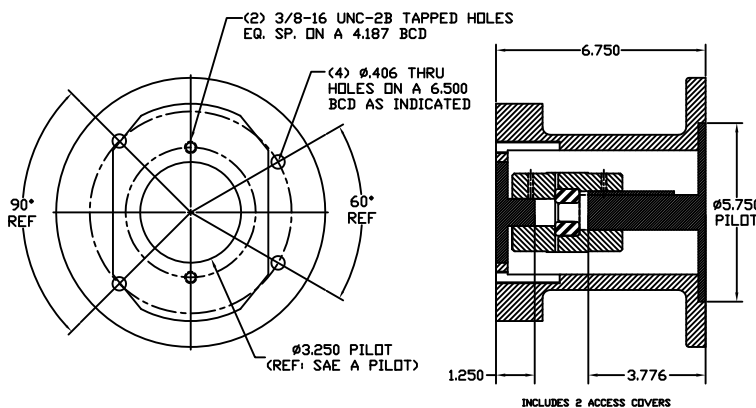
GX 610 THRU GX 630



GX 610 THRU GX 630



GX 660 THRU GX 690



GX 660 THRU GX 690

