



Dynaline Flexible Shaft Couplings



 **Guardian[®]**
Couplings
An Altra Industrial Motion Company

Why Choose Guardian?

For more than 70 years, Guardian has been designing and manufacturing world-class couplings and other power transmission components. Utilizing advanced manufacturing technologies and processes, Guardian provides highly-reliable coupling and component solutions to meet the most challenging industrial application requirements.

Guardian provides a wide range of standard and custom products including flywheel couplings, hydraulic pump mounts, bearing supported stub shafts, flexible shaft-to-shaft couplings, motion control couplings as well as compression pipe couplings.

Durable Guardian products are utilized in key industries including mobile hydraulics, farm & ag, tree care, concrete, food & beverage, material handling, automation, power generation, and oil & gas on applications such as skid steers, aerial lifts, harvesters, wood chippers, concrete pumps, dewatering pumps, baggage handlers, conveyors, robotics, compressors, and generator sets.

DYNALINE FLEXIBLE SHAFT COUPLINGS

Available in 4 sizes, the Dynaline is a single piece rubber-in-shear coupling. These couplings are used in sub-fractional thru 3HP applications, with torque ratings up to 54 IN-LBS. End fittings are made from zinc die castings, and are crimped to the rubber sleeve. Bore sizes up to 3/4" (19mm). The coupling length can be varied to suit many applications.

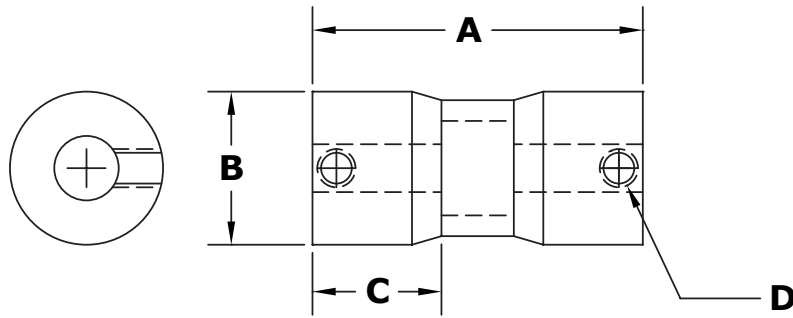


FEATURES & ADVANTAGES

- One-piece construction - No assembly, no wearing surfaces, easier installation.
- Corrosion-resistant end fittings are crimped to a neoprene sleeve to provide a maintenance free and longer life in difficult environments.
- Added length provides maximum angular and parallel misalignment. No need to align driver to driven components.
- Length to customer requirements.
- Neoprene sleeve provides a vibration free coupling which absorbs the shock of start-stop applications and peak overloads.
- Special designs or modifications engineered for the O.E.M. application

TO ORDER:

Specify overall length (A), both bore sizes (see below) and keyways if required.



Inches

Bore Range	Keyseat
3/8" to 1/2"	1/8" x 1/16"
5/8" to 7/8"	3/16" x 3/32"

Millimeters

Bore Range	Keyseat
6-7-8 mm	2 mm
9-10 mm	3 mm
11-12 mm	4 mm
13 thru 17 mm	5 mm
18 thru 22 mm	6 mm

Coupling Torque Ratings

Series Number	HP @ 3450 RPM	HP @ 1750 RPM	Nominal Torque in. lbs.	Standard Length	Motor Frame Size	Maximum Bore Size
1D	1/2	1/3	12	2-1/4"	48	1/2"
2D	1	1/2	18	2-1/2"	48	1/2"
3D	1-1/2	3/4	27	3"	56	5/8"
4D	3	1-1/2	54	3"	56 w/ Key	3/4"

Coupling Dimensions

Size	"A" Length		Length		B Diameter		C End Fitting		D Set Screws
	Minimum	(mm)	Maximum	(mm)		(mm)		(mm)	
1D	1-5/8"	(40 mm)	6"	(150 mm)	1	(25 mm)	11/16"	(18 mm)	1/4-20
2D	2-7/32"	(56 mm)	10"	(250 mm)	1-3/16"	(30 mm)	1"	(25 mm)	5/16-18
3D	2"	(50 mm)	10"	(250 mm)	1-9/32"	(33 mm)	1"	(25 mm)	5/16-18
4D	2-3/8"	(60 mm)	10"	(250 mm)	1-7/16"	(37 mm)	1-1/4"	(32 mm)	5/16-18

Length to customer's requirements, consult factory for high service factor ratings and effect of longer length. Metric set screws available.

Bore Specifications

Std. Finished Bores	1D	2D	3D	4D
Inches	1/4", 5/16", 3/8", 7/16", 1/2"	1/4", 5/16", 3/8", 7/16", 1/2"	5/16", 3/8", 7/16", 1/2", 9/16", 5/8"	7/16", 1/2", 9/16", 5/8", 3/4"
Metric	8-10-12 mm	8-10-12 mm	10-12-14-16 mm	14-16-18-20 mm
Max. Bore With Keyway	3/8" (10 mm)	3/8" (10 mm)	1/2" (12 mm)	5/8" (16 mm)

<p>Belted Drives and Sheaves</p> <p>TB Wood's <i>Belted Drives</i> Chambersburg, PA - USA 1-888-829-6637 – Press #5 <i>For application assistance:</i> 1-888-829-6637 – Press #7</p> <p>Couplings</p> <p>Ameridrives Couplings <i>Mill Spindles, Ameriflex, Ameridisc</i> Erie, PA - USA 1-814-480-5000 <i>Gear Couplings</i> San Marcos, TX - USA 1-800-458-0887</p> <p>Ameridrives Power Transmission <i>Universal Joints, Drive Shafts, Mill Gear Couplings</i> Green Bay, WI - USA 1-920-593-2444</p> <p>Bibby Turboflex <i>Disc, Gear, Grid Couplings, Overload Clutches</i> Dewsbury, England +44 (0) 1924 460801 Boksburg, South Africa +27(0) 11 918 4270</p> <p>Guardian Couplings <i>Engineered Flywheel Couplings, Engine Housings and Pump Mounts, Flexible Shaft Couplings</i> Michigan City, IN - USA 1-219-874-5248</p> <p>Huco Dynatork <i>Precision Couplings and Air Motors</i> Hertford, England +44 (0) 1992 501900 Chambersburg, PA - USA 1-888-829-6637</p>	<p>Couplings Cont.</p> <p>Lamiflex Couplings <i>Flexible Couplings, Bearing Isolators, and Coupling Guards</i> Cotia, SP - Brasil +55 (11) 4615-6300</p> <p>TB Wood's <i>Elastomeric Couplings</i> Chambersburg, PA - USA 1-888-829-6637 – Press #5 <i>For application assistance:</i> 1-888-829-6637 – Press #7 <i>General Purpose Disc Couplings</i> San Marcos, TX - USA 1-888-449-9439</p> <p>Electromagnetic Clutches and Brakes</p> <p>Inertia Dynamics <i>Spring Set Brakes; Power On and Wrap Spring Clutch/Brakes</i> New Hartford, CT - USA 1-800-800-6445</p> <p>Matrix International <i>Electromagnetic Clutches and Brakes, Pressure Operated Clutches and Brakes</i> Brechin, Scotland +44 (0) 1356 602000 New Hartford, CT - USA 1-800-825-6544</p> <p>Warner Electric <i>Electromagnetic Clutches and Brakes</i> New Hartford, CT - USA 1-800-825-6544 <i>For application assistance:</i> 1-800-825-9050 Saint Barthélemy d'Anjou, France +33 (0)2 41 21 24 24 <i>Precision Electric Coils and Electromagnetic Clutches and Brakes</i> Columbia City, IN - USA 1-260-244-6183</p>	<p>Engineered Bearing Assemblies</p> <p>Kilian Manufacturing <i>Engineered Bearing Assemblies</i> Syracuse, NY - USA 1-315-432-0700</p> <p>Gearing</p> <p>Bauer Gear Motor <i>Geared Motors</i> Esslingen, Germany +49 (711) 3518-0 Somerset, NJ - USA 1-732-469-8770</p> <p>Boston Gear <i>Enclosed and Open Gearing, Electrical and Mechanical P.T. Components</i> Charlotte, NC - USA 1-800-825-6544 <i>For application assistance:</i> 1-800-816-5608</p> <p>Nuttall Gear and Delroyd Worm Gear <i>Worm Gear and Helical Speed Reducers</i> Niagara Falls, NY - USA 1-716-298-4100</p> <p>Heavy Duty Clutches and Brakes</p> <p>Industrial Clutch <i>Pneumatic and Oil Immersed Clutches and Brakes</i> Waukesha, WI - USA 1-262-547-3357</p> <p>Svendborg Brakes <i>Industrial Brakes and Brake Systems</i> Vejstrup, Denmark +45 63 255 255</p> <p>Twiflex Limited <i>Caliper Brakes and Thrusters</i> Wichita Falls, TX - USA 1-844-723-3483 Twickenham, England +44 (0) 20 8894 1161</p>	<p>Heavy Duty Clutches and Brakes Cont.</p> <p>Wichita Clutch <i>Pneumatic Clutches and Brakes</i> Wichita Falls, TX - USA 1-800-964-3262 Bedford, England +44 (0) 1234 350311</p> <p>Linear Products</p> <p>Warner Linear <i>Linear Actuators</i> Belvidere, IL - USA 1-800-825-6544 <i>For application assistance:</i> 1-800-825-9050 Saint Barthélemy d'Anjou, France +33 (0)2 41 21 24 24</p> <p>Overrunning Clutches</p> <p>Formsprag Clutch <i>Overrunning Clutches and Holdbacks</i> Warren, MI - USA 1-800-348-0881 – Press #1 <i>For application assistance:</i> 1-800-348-0881 – Press #2</p> <p>Marland Clutch <i>Roller Ramp and Sprag Type Overrunning Clutches and Backstops</i> South Beloit, IL - USA 1-800-216-3515</p> <p>Stieber Clutch <i>Overrunning Clutches and Holdbacks</i> Heidelberg, Germany +49 (0) 6221-30470</p> <p><i>For information concerning our sales offices in Asia Pacific check our website www.altramotion.com.cn</i></p>
--	---	---	--

While Guardian Industries makes every effort to ensure the accuracy of the information provided, we make no warranty as to the accuracy or completeness of said information.



www.guardiancouplings.com

300 Indiana Highway 212
Michigan City, IN 46360 – USA
219-874-5248
Fax: 219-879-6643

Merchant Drive, Hertford
Hertfordshire SG13 7BL - England
+44(0)1992 501900
Fax: +44 (0)1992 509890