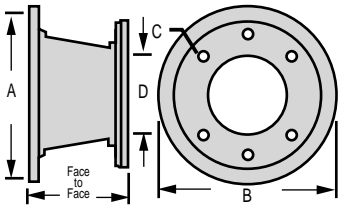


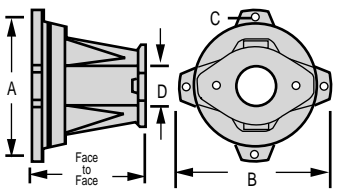
HORIZONTAL HYDRAULIC PUMP MOUNTS FOR ELECTRIC MOTORS "E" SERIES CONTINUED

Frame Number	Pump Mount Part Number	Motor Frame Size	SAE Pump Flange	Face To Face	Dimensions Of NEMA-C Face Mount End (inches)			Dimensions Of Pump Face Mount End (inches)		Access Cover Number	Maximum Coupling Diameter
					A	B	Bolt Circle C	D Nominal	Pump Bolt Circle		



Mount Basic Data
 Approximate Weight
 Frame 67 12 lb. 8 oz.
 Frame 68 12 lb. 8 oz.

67	E67-D2/4	324-326 TSC	D-2 Bolt	7.06"	12.50	13.00	11.00	6.00	9.00	AC 67	6.00
		264-365 TSC	D-4 Bolt					6.00	9.00		
68	E68-D2/4	324-320 TSC	D-2 Bolt	8.75"	12.50	13.00	11.00	6.00	9.00	AC 68	
		264-365 TSC	D-4 Bolt					6.00	9.00		
		404-405 TSC									

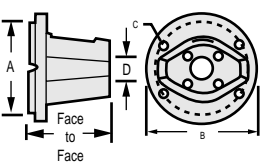


Mount Basic Data
 Approximate Weight
 Frame 69 3 lb.

69	E69				10.50	11.00	9.00	Adapts frames 51-61 to 284-286 TC & TSC motors			
----	-----	--	--	--	-------	-------	------	--	--	--	--

VERTICAL (TANK TOP) HYDRAULIC PUMP MOUNTS FOR ELECTRIC MOTORS "V" SERIES

Frame Number	Pump Mount Part Number	Motor Frame Size	SAE Pump Flange	Face To Face	Dimensions Of NEMA-C Face Mount End (inches)			Dimensions Of Pump Face Mount End (inches)	
					A	B	Bolt Circle C	D Nominal	Pump Bolt Circle



Mount Basic Data
 Approximate Weight
 Frame 70 1 lb. 6 oz.
 Frame 71 1 lb. 12 oz.

70	V70-A4	56C 143-145 TC	4F17	3.50"	4.50	6.625	5.875	1.78	2.828
	V70-AA		AA-2 Bolt					2.00	3.25
	V70-A2		A-2 Bolt					3.25	4.188
71	V71-A4	56C 143-145 TC	4F17	4.40"	4.50	6.625	5.875	1.78	2.828
	V71-AA		AA-2 Bolt					2.00	3.25
	V71-A2		A-2 Bolt					3.25	4.188