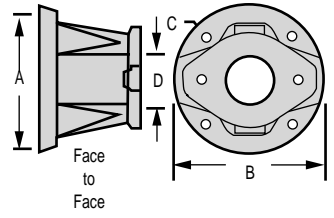


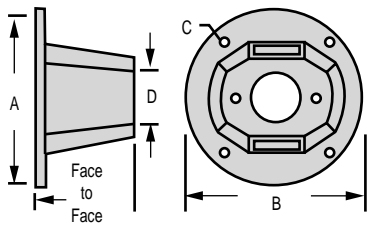
HORIZONTAL HYDRAULIC PUMP MOUNTS FOR ELECTRIC MOTORS "E" SERIES CONTINUED

Frame Number	Pump Mount Part Number	Motor Frame Size	SAE Pump Flange	Face To Face	Dimensions Of NEMA-C Face Mount End (inches)			Dimensions Of Pump Face Mount End (inches)		Access Cover Number	Maximum Coupling Diameter
					A	B	C <small>Bolt Circle</small>	D <small>Nominal</small>	Pump Bolt Circle		



Mount Basic Data
 Approximate Weight
 Frame 62 8 lb. 2 oz.
 Frame 63 8 lb. 7 oz.

62	E62-A2	284-286 TC 284-286 TSC	A-2 Bolt	6.87"	10.50 11.00 9.00	3.25	4.188	AC 62	4.50
	E62-B2		B-2 Bolt			4.00	5.75		
	E62-C2		C-2 Bolt			5.00	7.125		
63	E63-A2	284-286 TC 284-286 TSC	A-2 Bolt	7.87"	10.50 11.00 9.00	3.25	4.188	AC 63	
	E63-B2		B-2 Bolt			4.00	5.75		
	E63-C2		C-2 Bolt			5.00	7.125		



Mount Basic Data
 Approximate Weight
 Frame 64 7 lb.
 Frame 65 8 lb. 8 oz.
 Frame 66 10 lb.

64	E64-A2	324-326 TSC 364-365 TSC 404-405 TSC	A-2 Bolt	6.62"	12.50 13.00 11.00	3.25	4.188	AC 64	5.25
	E64-B2/4		B-2 Bolt			4.00	5.75		
			B-4 Bolt			4.00	5.00		
	E64-C2/4		C-2 Bolt			5.00	7.125		
			C-4 Bolt			5.00	6.375		
65	E65-A2	324-326 TSC 364-365 TSC 404-405 TSC	A-2 Bolt	7.06"	12.50 13.00 11.00	3.25	4.188	AC 65	5.25
	E65-B2/4		B-2 Bolt			4.00	5.75		
			B-4 Bolt			4.00	5.00		
	E65-C2/4		C-2 Bolt			5.00	7.125		
			C-4 Bolt			5.00	6.375		
66	E66-A2	324-326 TSC 364-365 TSC 404-405 TSC	A-2 Bolt	8.75"	12.50 13.00 11.00	3.25	4.188	AC 66	5.25
	E66-B2/4		B-2 Bolt			4.00	5.75		
			B-4 Bolt			4.00	5.00		
	E66-C2/4		C-2 Bolt			5.00	7.125		
			C-4 Bolt			5.00	6.375		