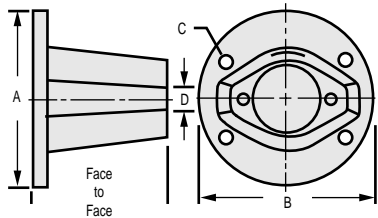


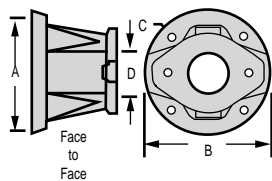
HORIZONTAL HYDRAULIC PUMP MOUNTS FOR ELECTRIC MOTORS "E" SERIES CONTINUED

Frame Number	Pump Mount Part Number	Motor Frame Size	SAE Pump Flange	Face To Face	Dimensions Of NEMA-C Face Mount End (inches)			Dimensions Of Pump Face Mount End (inches)		Access Cover Number	Maximum Coupling Diameter
					A	B	Bolt Circle C	D Nominal	Pump Bolt Circle		



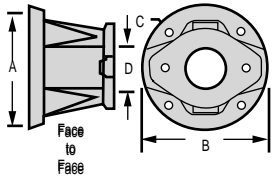
Mount Basic Data
 For single or light pump applications
 Approximate Weight
 Frame 53 3 lb. 6 oz.
 Frame 54 3 lb. 8 oz.
 Frame 55 4 lb.
 Frame 56 4 lb. 2 oz.
 Frame 57 2 lb. 14 oz.

53	E53-A2	182-184 TC 213-215 TC	A-2 Bolt	5.81"	8.50 8.75 7.25	3.25	4.828	AC 53	3.50
54	E54-B2		B-2 Bolt			4.00	5.75	AC54	4.00
55	E55-A2		A-2 Bolt	6.81"		3.25	4.188	AC55	3.50
56	E56-B2		B-2 Bolt			4.00	5.75	AC56	4.00
57	E57-A2S	254-256 TC	A-2 Bolt	5.06"	8.50 8.75 7.25	3.25	4.188	AC57	3.50
	E57-A2L		A-2 Bolt	5.12"		3.25	4.188		



Mount Basic Data
 For multiple or heavy pump applications
 Approximate Weight
 Frame 58 5 lb. 2 oz.
 Frame 59 5 lb. 7 oz.

58	E58-A2	182-184 TC	A-2 Bolt	5.81"	8.50 8.75 7.25	3.25	4.188	AC 58	4.00
	E58-B2	213-215 TC	B-2 Bolt			4.00	5.75		
	E58-C2	254-256 TC	C-2 Bolt			5.00	7.125		
59	E59-A2	182-184 TC	A-2 Bolt	6.81"	8.50 8.75 7.25	3.25	4.188	AC 59	4.00
	E59-B2	213-215 TC	B-2 Bolt			4.00	5.75		
	E59-C2	254-256 TC	C-2 Bolt			5.00	7.125		



Mount Basic Data
 Approximate Weight
 Frame 60 5 lb. 8 oz.
 Frame 61 5 lb. 6 oz.

60	E60-A2/4	182-184 TC	A-2 Bolt	6.81"	8.50 8.75 7.25	3.25	4.188	AC 60	4.50
		213-215 TC 254-256 TC	A-4 Bolt			3.25	4.130		
61	E61 B2/4	182-184 TC	B-2 Bolt	6.81"	8.50 8.75 7.25	4.00	5.75	AC 61	4.50
		213-215 TC 254-256 TC	B-4 Bolt			4.00	5.00		