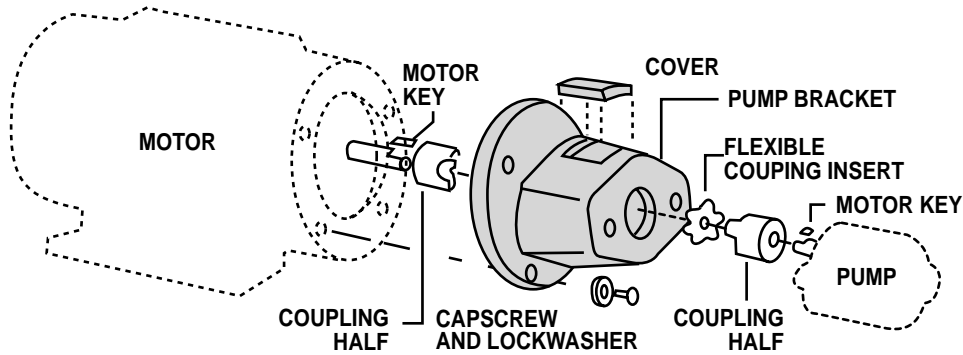
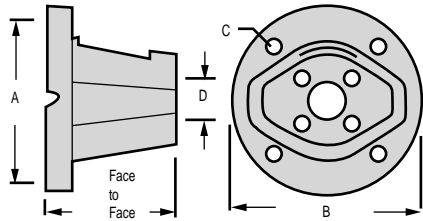


HORIZONTAL HYDRAULIC PUMP MOUNTS FOR ELECTRIC MOTORS "E" SERIES



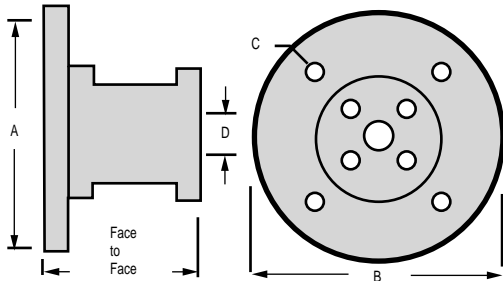
Frame Number	Pump Mount Part Number	Motor Frame Size	SAE Pump Flange	Face To Face	Dimensions Of NEMA-C Face Mount End (inches)			Dimensions Of Pump Face Mount End (inches)		Access Cover Number	Maximum Coupling Diameter
					A	B	C	D	Pump Bolt Circle		



Mount Basic Data

Approximate Weight
 Frame 49 1 lb. 12 oz.
 Frame 50 1 lb. 14 oz.

49	E49-A4	56C 143-145 TC	4F17	3.50"	4.50 6.625 5.875	1.78	2.828	AC 49	3.00
	E49-AA		AA-2 Bolt			2.00	3.25		
	E49-A2		A-2 Bolt			3.25	4.188		
50	E50-A4	56C 143-145 TC	4F17	4.40"	4.50 6.625 5.875	1.78	2.828	AC 50	3.00
	E50-AA		AA-2 Bolt			2.00	3.25		
	E50-A2		A-2 Bolt			3.25	4.188		



Mount Basic Data

Approximate Weight
 Frame 51 2 lb. 13 oz.
 Frame 52 3 lb. 7 oz.

51	E51-A4	182-184 TC 213-215 TC	4F17	5.12"	8.50 8.75 7.25	1.78	2.828	AC 51	3.50
	E51-AA		AA-2 Bolt			2.00	3.25		
	E51-A2		A-2 Bolt			3.25	4.188		
52	E52-A4	254-256 TC	4F17	6.40"	8.50 8.75 7.25	1.78	2.828	AC 52	3.50
	E52-AA		AA-2 Bolt			2.00	3.25		
	E52-A2		A-2 Bolt			3.25	4.188		