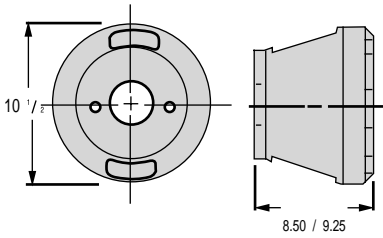


ENGINE MOUNT SELECTION CHART "G" SERIES CONTINUED

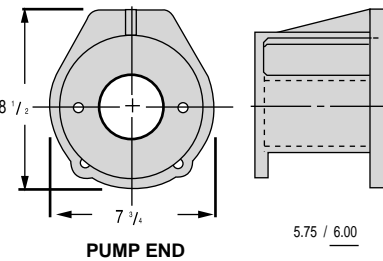
Frame Number	Pump Flange	Engine Data			
		Bolt Circle 8-5/8" Pilot 7-7/8"	Bolt Circle 9 1/4" Pilot 7 7/8"	Bolt Circle 9 1/4" Pilot 8 1/4"	Bolt Circle ONAN Pilot 6 3/8"



Mount Basic Data

Access Cover AC24 (2 Required)
 Maximum Coupling Diameter 7"
 Approximate Weight 16 lb. 7 oz.

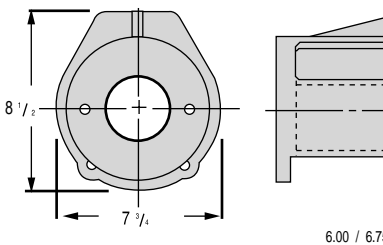
24	SAE A	-217	-218	-219	
	SAE B 2 BOLT	-220	-221	-222	
	SAE B 4 BOLT	-223	-224	-225	



Mount Basic Data

Access Cover AC25
 Maximum Coupling Diameter 5-1/2"
 Approximate Weight 4 lb. 10 oz.

25	AF17				-226
	SAE AA				-227
	SAE A				-228



Mount Basic Data

Access Cover AC26
 Maximum Coupling Diameter 5-1/2"
 Approximate Weight 6 lb. 3 oz.

26	SAE A				-229
	SAE B 2 BOLT				-230
	SAE B 4 BOLT				-231