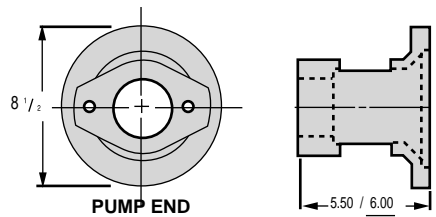


ENGINE MOUNT SELECTION CHART "G" SERIES CONTINUED

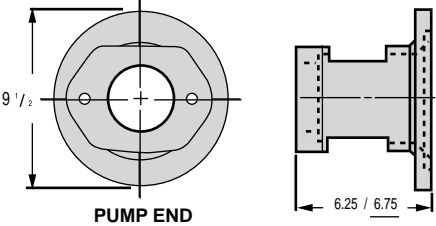
Frame Number	Pump Flange	Engine Data						
		Bolt Circle 6-1/2" Pilot 5-3/4"	Bolt Circle 7-3/4" Pilot 7"	Bolt Circle 7-3/4" Pilot 7" Wisonsin TJD	Bolt Circle 7-3/4" Pilot 7" Wisonsin AENL	Bolt Circle 7-3/4" Pilot 6-7/16"	Bolt Circle 7-3/4" Pilot 6-7/16" 7" Option B&S 10hp Cast Iron	Bolt Circle 7-3/4" Pilot 6-7/16" 7" Option B&S 16hp Cast Iron



Mount Basic Data
 Access Cover AC21 (2 Required)
 Maximum Coupling Diameter 3-7/8"
 Approximate Weight 5 lb. 2 oz.

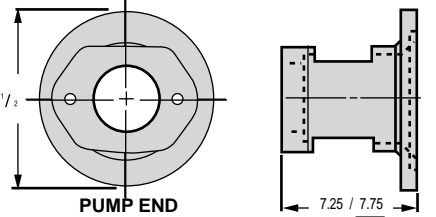
21	SAE A	-197	-198	-199	-200	-201	-202	-203
	SAE B 2 Bolt	-204	-205	-206	-207	-208	-209	-210

Frame Number	Pump Flange	Engine Data		
		Bolt Circle 8-5/8" Pilot 7-7/8"	Bolt Circle 9-1/4" Pilot 7-7/8"	Bolt Circle 9-1/4" Pilot 8-1/4"



Mount Basic Data
 Access Cover AC22 (2 Required)
 Maximum Coupling Diameter 3-7/8"
 Approximate Weight 8 lb. 3 oz.

22	SAE A	-211	
	SAE B 2 BOLT	-212	
	SAE B 4 BOLT	-213	



Mount Basic Data
 Access Cover AC23 (2 Required)
 Maximum Coupling Diameter 3-7/8"
 Approximate Weight 8 lb. 13 oz.

23	SAE A	-214	
	SAE B 2 BOLT	-215	
	SAE B 4 BOLT	-216	