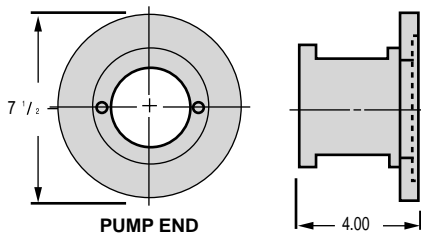


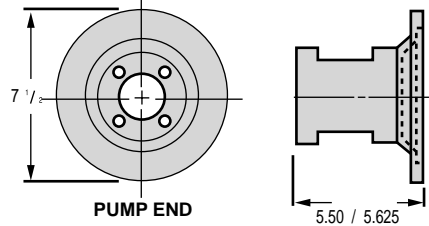
ENGINE MOUNT SELECTION CHART "G" SERIES CONTINUED

Frame Number	Pump Flange	Engine Data		
		Bolt Circle 3-5/8" Pilot Diameter (none) 1.780 Clearance Diameter	Bolt Circle 3-5/8" Pilot Diameter 1.625	Bolt Circle 6-1/2" Pilot Diameter 5.750



Mount Basic Data
 Access Cover AC14 (2 Required)
 Maximum Coupling Diameter 3-1/2"
 Approximate Weight 2 lb. 2 oz.

14	4F17			-114
	SAE AA			-115
	SAE A			-116

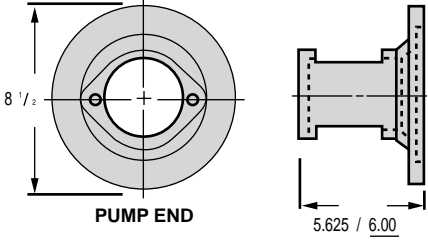


Mount Basic Data
 Access Cover AC15 (2 Required)
 Maximum Coupling Diameter 3"
 Approximate Weight 3 lb. 1 oz.

15	4F17			-117
	SAE AA			-118

ENGINE MOUNT SELECTION CHART "G" SERIES

Frame Number	Pump Flange	Engine Data						
		Bolt Circle 6-1/2" Pilot 5-3/4"	Bolt Circle 7-3/4" Pilot 7"	Bolt Circle 7-3/4" Pilot 7"	Bolt Circle 7-3/4" Pilot 7"	Bolt Circle 7-3/4" Pilot 6-7/16"	Bolt Circle 7-3/4" Pilot 6-7/16" 7" Option B&S 10hp Cast Iron	Bolt Circle 7-3/4" Pilot 6-7/16" 7" Option B&S 16hp Cast Iron



Mount Basic Data
 Access Cover AC16 (2 Required)
 Maximum Coupling Diameter 3-1/4"
 Approximate Weight 4 lb. 5 oz.

16	4F17	-119	-120	-122	-123	-124	-125	-126
	SAE AA	-127	-128	-129	-130	-131	-132	-133
	SAE A	-134	-135	-136	-137	-138	-139	-140