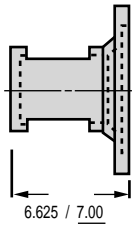
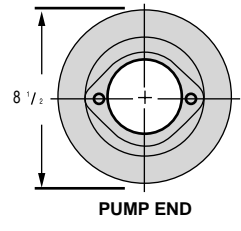


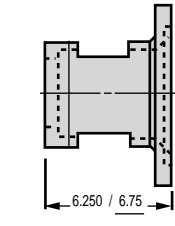
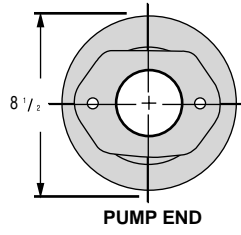
ENGINE MOUNT SELECTION CHART "G" SERIES CONTINUED

Frame Number	Pump Flange	Engine Data						
		Bolt Circle 6-1/2" Pilot 5-3/4"	Bolt Circle 7-3/4" Pilot 7"	Bolt Circle 7-3/4" Pilot 7"	Bolt Circle 7-3/4" Pilot 7"	Bolt Circle 7-3/4" Pilot 6-7/16"	Bolt Circle 7-3/4" Pilot 6-7/16" 7" Option B&S 10hp Cast Iron	Bolt Circle 7-3/4" Pilot 6-7/16" 7" Option B&S 16hp Cast Iron
				Wisconsin TJD	Wisconsin AENL			



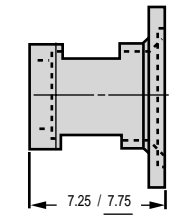
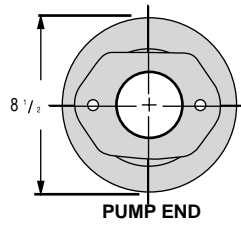
Mount Basic Data
 Access Cover AC17 (2 Required)
 Maximum Coupling Diameter 3-1/4"
 Approximate Weight 4 lb. 15 oz.

17	SAE A	-141	-142	-143	-144	-145	-146	-147
----	-------	------	------	------	------	------	------	------



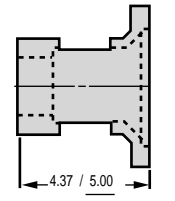
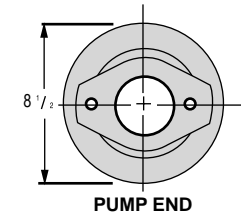
Mount Basic Data
 Access Cover AC18 (2 Required)
 Maximum Coupling Diameter 3-7/8"
 Approximate Weight 7 lb. 8 oz.

18	SAE A	-148	-149	-150	-151	-152	-153	-154
	SAE B 2 BOLT	-155	-156	-157	-158	-159	-160	-161
	SAE B 4 BOLT	-162	-163	-164	-165	-166	-167	-168



Mount Basic Data
 Access Cover AC19 (2 Required)
 Maximum Coupling Diameter 3-7/8"
 Approximate Weight 8 lb.

19	SAE A	-169	-170	-171	-172	-173	-174	-175
	SAE B 2 BOLT	-176	-177	-178	-179	-180	-181	-182
	SAE B 4 BOLT	-183	-184	-185	-186	-187	-188	-189



Mount Basic Data
 Access Cover AC17 (2 Required)
 Maximum Coupling Diameter 3-7/8"
 Approximate Weight 5 lb. 3 oz.

20	SAE B 2 BOLT	-190	-191	-192	-193	-194	-195	-196
----	-----------------	------	------	------	------	------	------	------