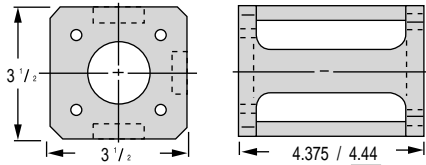


# ENGINE MOUNT SELECTION CHART "G" SERIES

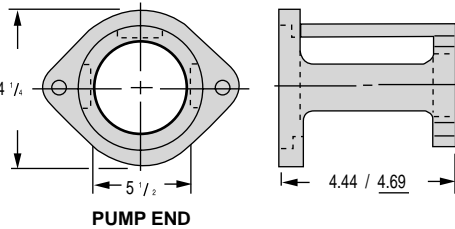
Frame Number	Pump Flange	Engine Data		
		Bolt Circle 3-5/8" Pilot Diameter (none) 1.780 Clearance Diameter	Bolt Circle 3-5/8" Pilot Diameter 1.625	Bolt Circle 6-1/2" Pilot Diameter 5.750



### Mount Basic Data

Access Cover AC10 (1 Required)  
Maximum Coupling Diameter 2-1/2"  
Approximate Weight 1 lb. 3 oz.

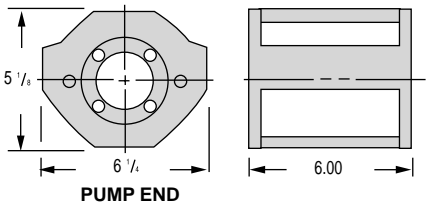
10	4F17	-101	-102	
----	------	------	------	--



### Mount Basic Data

Access Cover AC11 (1 Required)  
Maximum Coupling Diameter 2-1/2"  
Approximate Weight 1 lb. 6 oz.

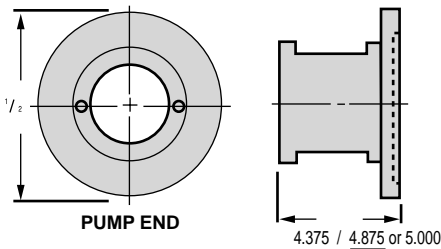
11	4F17	-103	-104	
	SAE A-A	-105	-106	
	SAE A	-107	-108	



### Mount Basic Data

Access Cover AC12 (1 Required)  
Maximum Coupling Diameter 4"  
Approximate Weight 2 lb. 11 oz.

12	SAEA	-109	-110	
----	------	------	------	--



### Mount Basic Data

Access Cover AC13 (2 Required)  
Maximum Coupling Diameter 3-1/2"  
Approximate Weight 3 lb. 2 oz.

13	4F17			-111
	SAE A-A			-112
	SAE A			-113